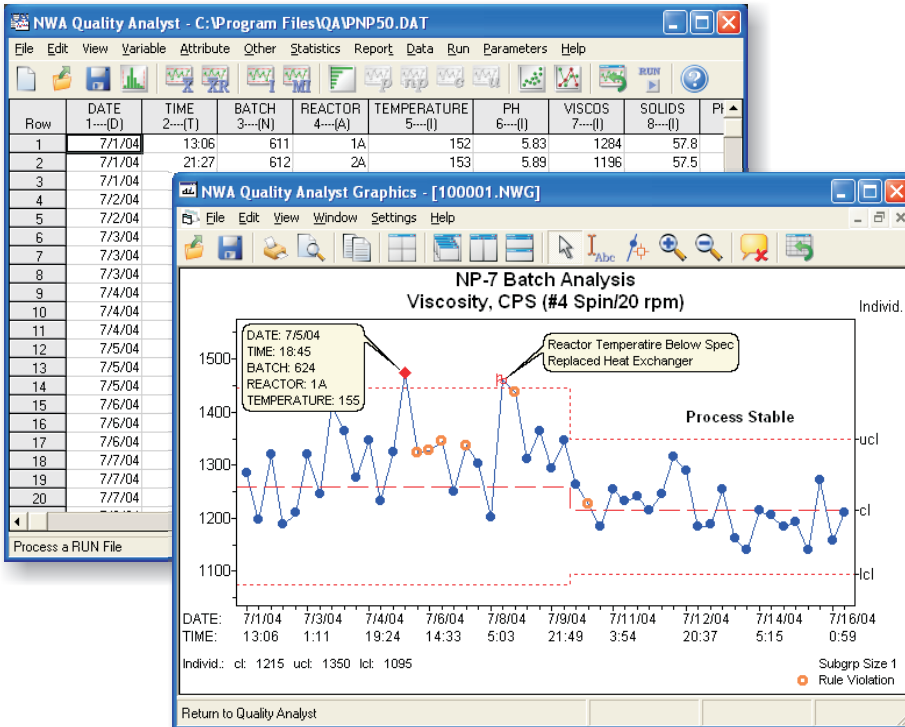




Quality Analyst

What's New in Version 6?



- **Assignable Cause/ Corrective Action**
- **New Graphics Viewer**
- **Improved drill-down to underlying data**
- **All output available in XML**
- **Reads specifications from databases**
- **Fully synchronized with external databases**

Why Update to NWA Quality Analyst® 6?

Many of the improvements in Version 6 are aimed at meeting the expanding needs of users engaged in process-improvement programs such as Six Sigma or CAPA. You will benefit from improved drill-down and chart annotation in the Graphics Viewer, inclusion of text reports in grouped output, and the addition of Assignable Cause/Corrective Action capability.

Other key improvements address the growing need to integrate SPC and other quality-related programs with plant-level and enterprise manufacturing information systems. Version 6 addresses these needs with improved database connectivity setup (particularly for denormalizing data tables), the ability to read specifications from external databases, automatic synchronization of SPC information with records in external databases, and analytical output in XML.

More Powerful Presentation of Chart Data

New Graphics Viewer — It is now easier to present information within your charts so you can more clearly illustrate changes in your processes. The Graphics Viewer includes unlimited data points on SPC charts, text output in groups, the ability to save groups as plot files, user-defined plotting symbols, improved callouts, direct editing of headers and footers, better font and color control, and point-and-click zoom.

Rainbow charts — Configurable green/yellow/red zone options for SPC charts.

More graphic formats — Creates JPG, PNG, and BMP files to enable mixed text and graphics reporting that is easily exported to enterprise applications such as ERP, MES, and LIMS.

Assignable Cause / Corrective Action

You can now select assignable causes and corrective actions from predefined lists or attach *ad hoc* comments to any data point, supporting quality initiatives and compliance programs such as Six Sigma, ISO 9000, and the FDA's CAPA.

Improved Drill-Down to Underlying Data

View descriptive information, rule violations, comments, and assignable cause/corrective action for any data point with a single mouse-click.

XML Graphics and Parameter Files

All configuration, parameter, and output files use XML formats, simplifying integration with enterprise applications such as ERP, MES, and LIMS.

Automatic Specification Lookup

NWA Quality Analyst® can now read specifications from external databases, which lets you centralize the management of specifications and improve integration with enterprise applications.

SPC Parameters Synchronized with Databases

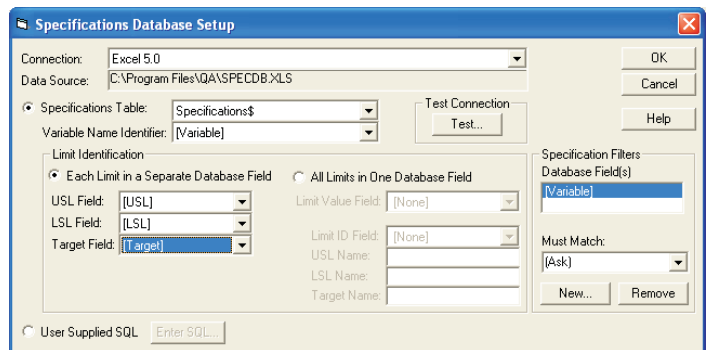
Automatically links comments, Assignable Cause/Corrective Action, SPC limits, and tagged data to the appropriate record in external databases.

Other Enhancements

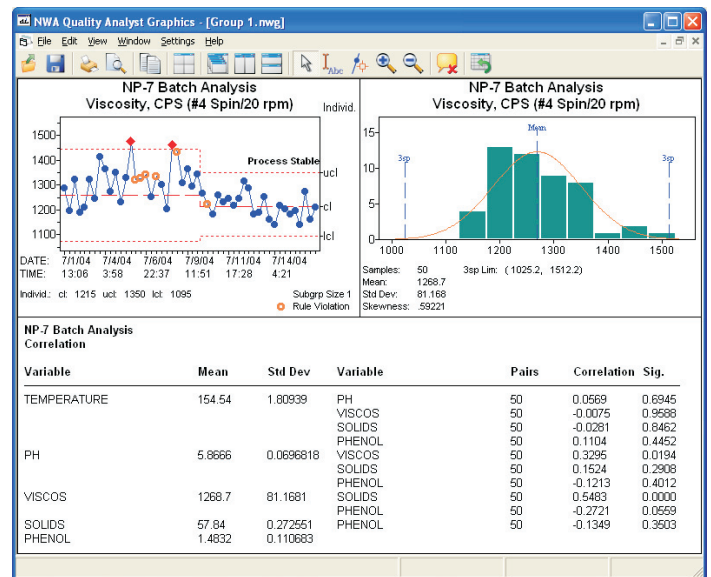
- **Full support for Universal Naming Convention (UNC) and long path names** — Eliminates the need for mapped drives and simplifies setup in any network environment.
- **Improved Run Charts** — Plot up to eight variables and full x-axis labeling for improved multivariable graphing.
- **Improved database denormalization** — Helps with the complex task of denormalization during database connectivity.
- **Improved numeric formatting** — Specifications maintain significant digits and you have more control over the format of statistical results.
- **Data set limit increased to 500 columns** — Larger data sets better support data-rich environments such as multicavity injection molding, electronic assembly, and multiplant studies.
- **Supports Unicode (double-byte text)** — Internationalized text and symbol handling now supports Asian characters and other non-ASCII languages in data, chart labels, and text-based reports.
- **Stability analysis regression** — Supports food and drug stability studies.

System Requirements

NWA Quality Analyst is compatible with all major PC networks including Windows* NT and Novell. It runs on all 32-bit Windows platforms including Windows 95, 98, 2000, Me, NT and XP. It is compatible with Citrix and Microsoft* Terminal Services.



Simple form-based configuration for reading specifications from databases.



Charts can now display both graphics and text in the same group.

About NWA Quality Analyst

NWA Quality Analyst is an award-winning SPC charting-and-analysis software solution. It provides the best combination of power, flexibility, and ease-of-use of any SPC software solution available. While conforming to the most stringent technical requirements, it enables a wide range of users to graphically analyze process behavior and judge the impact of process-improvement decisions with minimal training in statistical techniques. It integrates with all major manufacturing information systems. Quality Analyst is used by more than 5,000 manufacturers to analyze plant data for vendor certification, regulatory compliance, process improvement, and cost reduction.

To update to NWA Quality Analyst 6:

PHONE: (503) 224-7727
 TOLL-FREE: (888) 692-7638
 EMAIL: sales@nwasoft.com