

Monarch V8

Upgrade to Monarch V8 Today. Now, there are no limits!

Monarch V8 is not just a new version...it's a **new vision**, extending the reach and power of the #1 Report Mining and Analysis solution farther than ever before! Discover the vast, wide range of new and improved features of Monarch V8 Standard™ and Pro...you'll like what you see!

Upgrade to Monarch V8 Standard or Pro today.

Monarch Version 8 is here!

*With so many
powerful new features,
including mining data
from PDF files,
you'll find
no limits
to your work!*





Take a scenic tour of the powerful new Monarch V8!

Mine Data from PDF Files

This may be our most exciting new feature ever! Simply open your PDF file in Monarch V8 Pro™. Monarch Pro converts your PDF into text for easy report mining, with no other software required.

You can even use Monarch V8 Pro to **export** your table or summary data in PDF format, complete with selected fonts and colors!

Turn your PDF-based reports and business documents into live data with Monarch V8 Pro!

Monarch Pro Only

PDF Import Options

Output scaling: 3

Input is monospaced

Input is freeform text

Sample Page:

Date: Wednesday, February 23, 3:40 PM
All Orders- With Details

PO Number	Supplier	Supplier Name	Product Code	Order Qty
P01	0214	Carmichael Company		
#	Item Number			
1	I01		2AW-256	5000.0
2	I02		8AW-358	1000.0
3	I03		4AW-395	1000.0
P02	1880	Michele Car Plus Ltd.		
#	Item Number			
1	I05		N22-1	1000.0
2	I06		N18-4	1000.0

Here are more exciting features available for both Monarch V8 Standard and Pro!

Monarch

Name: Detail

Type: Page Header Append Detail Footer Floating Trap

Trap Line: 1 of 1

T NN

S DEPR_ALLOC 1 CA TR200358 NO CA AUTOMOBILE 03

Account	60200-0000	Rent Space	AD	TR200200	NO	AP	RENT001	02	31,108.00
1293	SHORE CORPORATION		AD	TR200220	NO	AP	100001181	02	13,388.76
1214	PINE TREE GROUP LLC		AD	TR200256	NO	AP	S&ARENTS	02	31,108.00
1293	SHORE CORPORATION		RENT	ADJ					200.00
1233	SERVICE SUPERIOR CO		AD	TR200234	NO	AP	100001245	02	165.02
1275	ENVIRO CO		AD	TR200234	NO	AP	100001395	02	834.88
1038	POWERHOUSE CORP		AD	TR200234	NO	AP	100001461	02	676.41



Push Right

Shift Templates Left or Right

Sometimes your existing report is changed slightly, with data moving a few spaces to the left or right. With Monarch V8, you can now easily adjust your existing Monarch model template! No need to create a new model to match your altered report!

Monarch

Name: Detail

Type: Page Header Append Detail Footer Floating Trap

Trap Line: 1 of 1

T NN

S DEPR_ALLOC 1 CA TR200358 NO CA AUTOMOBILE 03

Account	60200-0000	Rent Space	AD	TR200200	NO	AP	RENT001	02	31,108.00
1293	SHORE CORPORATION		AD	TR200220	NO	AP	100001181	02	13,388.76
1214	PINE TREE GROUP LLC		AD	TR200256	NO	AP	S&ARENTS	02	31,108.00
1293	SHORE CORPORATION		RENT	ADJ					200.00
1233	SERVICE SUPERIOR CO		AD	TR200234	NO	AP	100001245	02	165.02
1275	ENVIRO CO		AD	TR200234	NO	AP	100001395	02	834.88
1038	POWERHOUSE CORP		AD	TR200234	NO	AP	100001461	02	676.41

Enter trap characters. Character matching option is currently set to not case-se Trap: Position 65

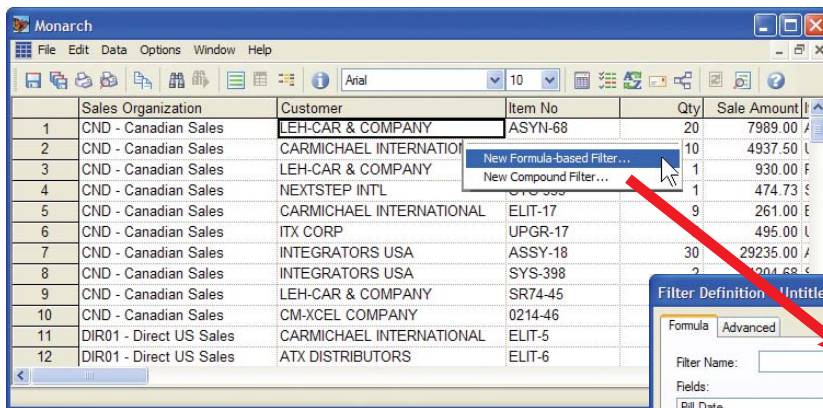
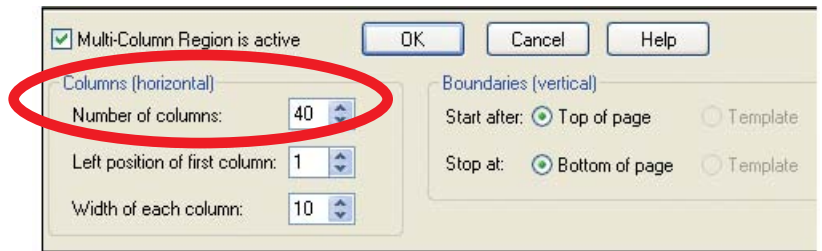


Even more Monarch V8 sights to see...!

More New Report Features

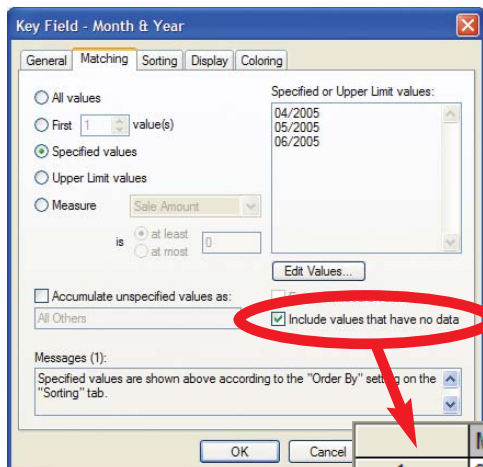
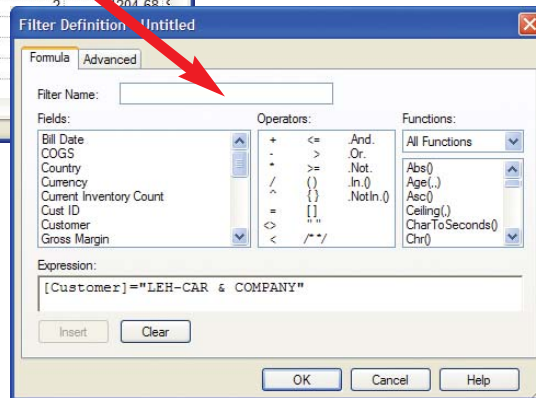
Monarch V8 now accepts extra-wide report files...up to 4,000 characters wide (previously 1,000 characters)!

Plus, you can use **Monarch V8's Multi-Column Region** feature to mine data from **up to 40 columns** appearing in a multi-column report, such as name and address lists, customer statements, or any other report appearing in "newspaper style" multiple column format.



Quick Filter and Sort Creation

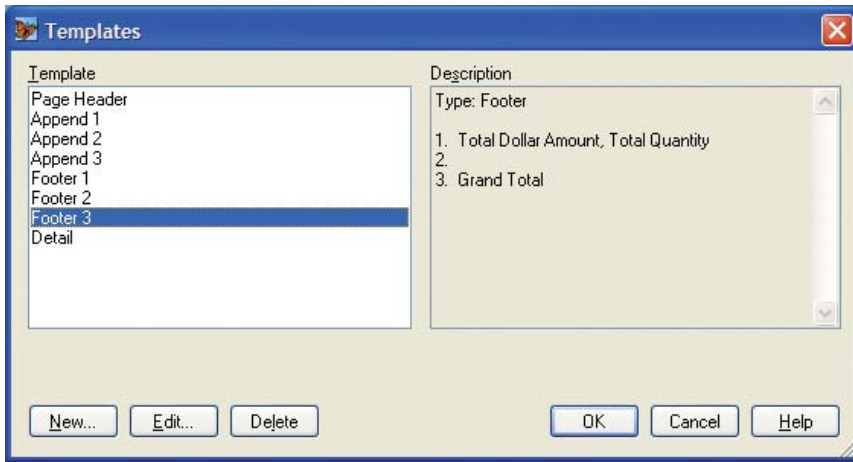
When in the Monarch V8 Table view, you can right-click on any value, and have Monarch automatically create a sort or filter based on that value!



Improved Summary Data Display

Monarch V8 now allows you to display specified values in your summary even if no data exists.

	Month & Year	Sale Amount
1	04/2005	7762.00
2	05/2005	
3	06/2005	9426.00
4	Summary	17188.00



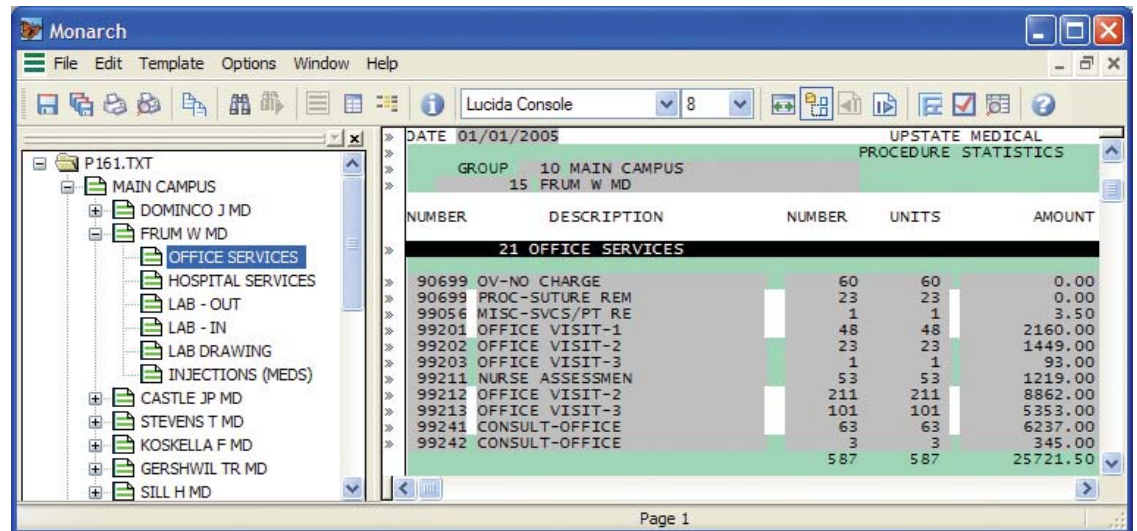
Multiple Footers

Past versions of Monarch allowed for only one “Footer” template. Monarch V8 now lets you create multiple footers to access data previously unreachable!

Report Tree View

Monarch V8 now allows you to create a report navigation tree to automatically jump to any desired portion of your report (previously available only separately as Monarch Report Explorer).

You can now highlight any report line and “jump” to the row in your Monarch table containing the data from that report row! Also, when viewing summarized data, you can jump back to the corresponding detail data!



Function Name	Description
Replace	Replaces each instance of a text substring with a new substring.
InTrim	Trims any consecutive spaces in a text string so there is only one space between each word. Also removes leading and trailing spaces.
TextLine	Great for working with Memo fields, splits a multi-line string based on line breaks and returns a specific text line.
Age	Returns the number of years, months, weeks, days, hours, minutes or even seconds(!) between two specified dates.
RSplit and LSplit	Improved: Splits a text string into n parts and returns a desired part. Previously the “split” was performed based on a single character; multiple characters can now be used.

New Calculated Field Functions

Work with your Monarch data like never before! Monarch V8 offers six new and improved Calculated Field functions. You can now also create calculated fields with memo data type; great for working with large blocks of text.

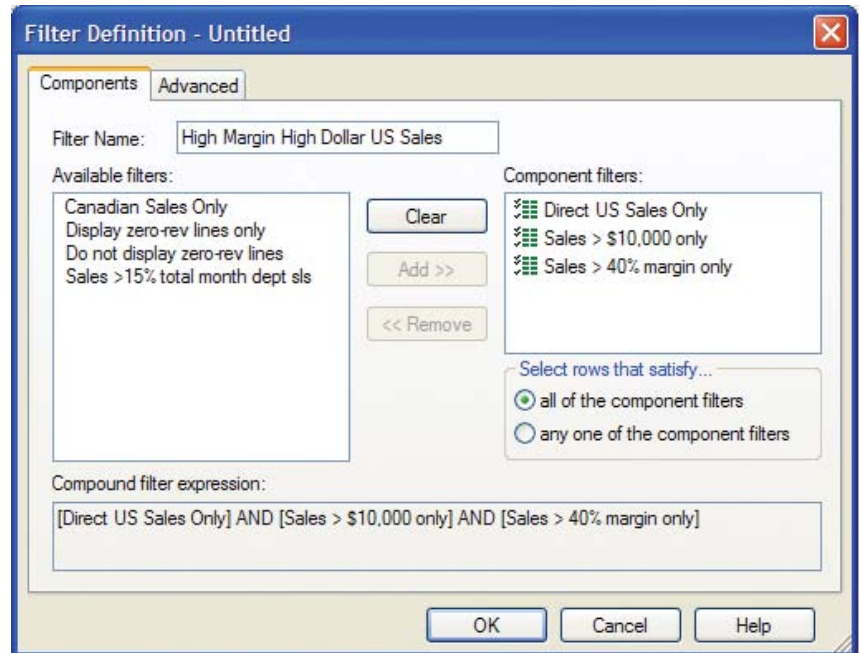
	Customer	Sale Amount	User Edited Field
1	INTEGRATORS USA	29235.00	New customer!
2	LEH-CAR & COMPANY	11983.50	Down from last year, need info
3	ATX DISTRIBUTORS	10564.20	
4	ATX DISTRIBUTORS	25694.46	Great team effort here
5	LEH-CAR & COMPANY	10097.34	

New "User-Edited Fields"

Lets you selectively fill in data however you wish, much like a typical Excel column! Easily add your own customized text comments, numeric values, or dates, etc.

New "Compound Filters"

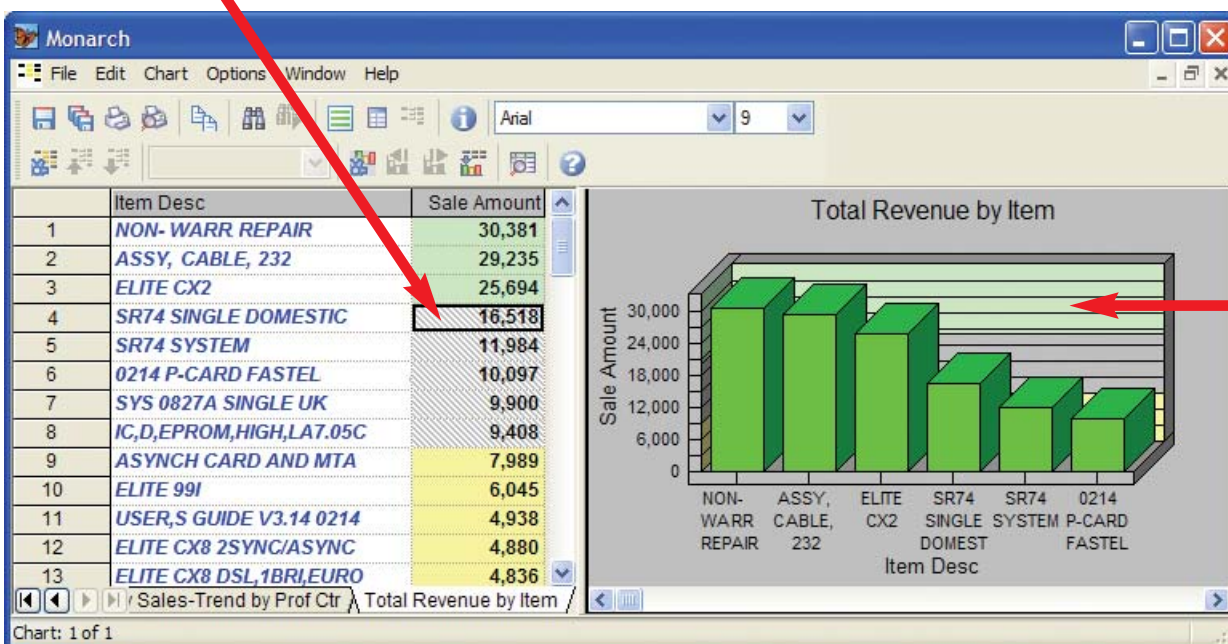
Lets you easily combine existing data filters together. Precise filters based on multiple criteria are now much easier to define.



Improved Formatting of Summary Data and Charts

With new options and a more user-friendly interface, it's easier than ever to format your Monarch Summary data and charts to match your needs! Plus, your Summary page breaks, headers and footers are carried through to Excel when exporting.

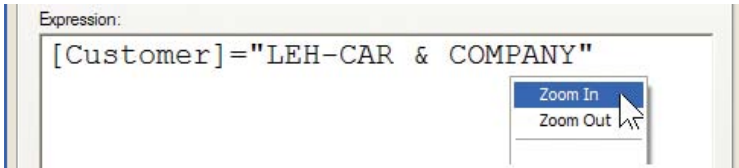
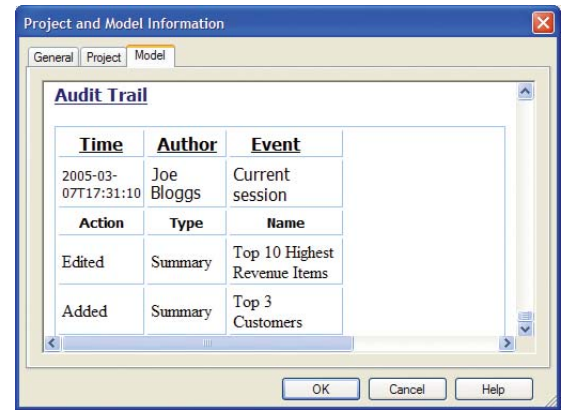
You can now specify patterns as well as colors for your summary data.



You can now include coloring limits on your charts!

Audit Trail

Monarch V8 now tracks changes made to your Monarch model, creating and updating an audit trail for easy viewing at any time.

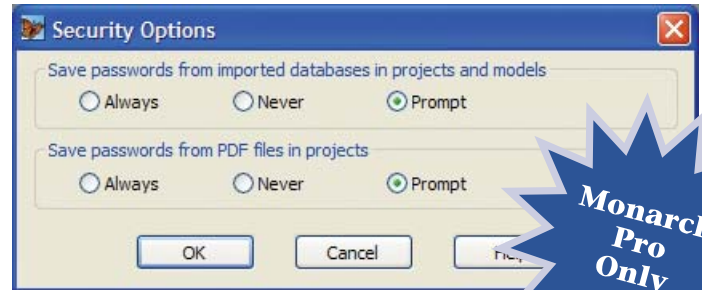


Font Zooming in Formula Editor

Monarch V8 lets you easily enlarge the font size used in the Formula Editor; a welcome improvement for visually handicapped Monarch users.

More Monarch V8 Pro Improvements

In addition to mining data from PDF files, and exporting data in PDF format, Monarch V8 Pro also offers faster, more flexible importing of data from databases, spreadsheets, CSV files and more. Monarch V8 Pro also lets you change the data type of imported fields. You can also choose to save passwords for PDF files or databases within your Monarch model, with high encryption.



Monarch Pro Only

Requirements and Compatibility

Monarch Version 8 Standard and Pro Editions require Windows 98, ME, 2000, XP, 2003 or NT 4.0 SP6. Version 8 can read model files and portable report files created with earlier versions of Monarch.

How to Upgrade

There are three upgrade paths to choose from:

1. A single user upgrade from Monarch V7 Standard Edition to Monarch V8 Standard Edition is \$189.
2. A single user upgrade from Monarch V7 Professional Edition to Monarch V8 Professional Edition is \$199.
3. A single user upgrade from Monarch V7 Standard Edition to Monarch V8 Professional Edition is \$299.

If you're upgrading a multi-user network, call 800-445-3311 for details.

IMPORTANT NOTE: In order to successfully perform the upgrade to Version 8, you must have an earlier version of Monarch installed on your system.

Datawatch Corporation • 175 Cabot Street, Suite 503, Lowell, MA 01854 • Tel: 978-441-2200 • Fax: 978-458-1115
www.datawatch.com • 1-800-445-3311