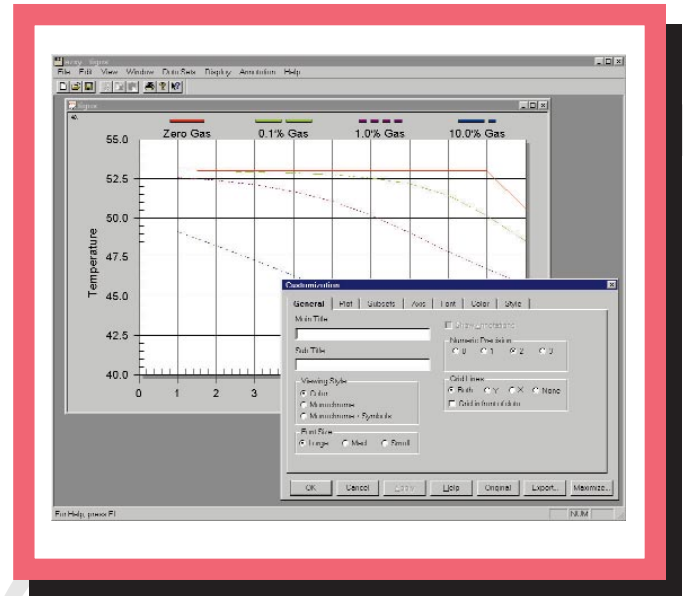




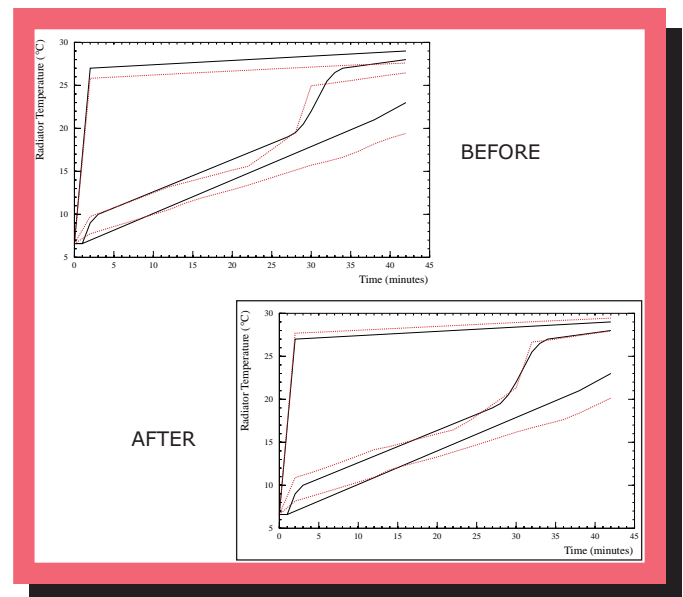
- Radiation, conduction, convection and advection, diffusion.
- Component design to full system-level performance simulations.
- Submodels for improved organization and ease of model merging.
- Time- and temperature-varying properties.
- Single and two-phase flow, including evaporation and condensation, pure fluids and mixtures.
- Homogeneous or slip two-phase flow with automatic flow regime determination.
- Built-in library of fluid properties, or user-defined libraries.
- Common fluid system components such as pumps and valves.
- Available • nonequilibrium two-phase control volumes, gas/liquid dissolution high-speed compressible flows, choking detection and modeling • waterhammer and acoustic wave tracking.
- Time- and direction-varying body forces, including natural convection.

APPLICATIONS

- Electronics packaging • Automobile and aircraft engine cooling, air conditioning, fuel, lubrication and hydraulic systems • Spacecraft and launch vehicle thermal control, propulsion, and environmental control • Power generation systems • Oil and gas pipeline and distribution systems • Process design and control
- Furnaces and kilns



Plotting in C&R's EZ-XY®



Automated calibration to test data

C&R TECHNOLOGIES

9 Red Fox Lane
Littleton CO 80127-5710

Phone 303.971.0292

Facsimile 303.742.1540