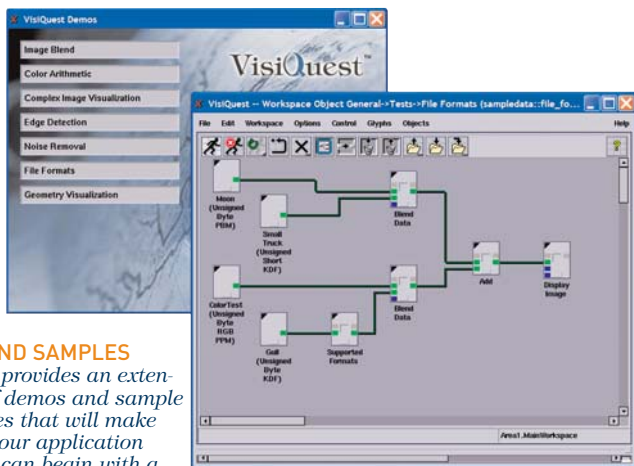


VisiQuest Visual Programming

Data and Image Analysis as easy as 1-2-3

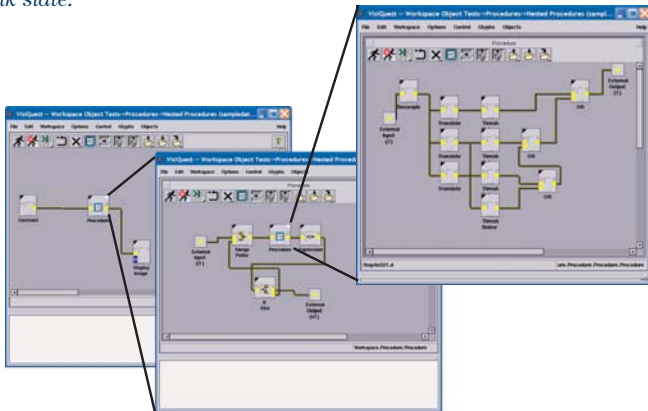
Without writing a single line of code, you can quickly create complex applications to run against your data. Use the environment to build embedded applications, create new products, prototype, problem solve, or just understand the data at hand.

All 300+ functions delivered with the product are available as an icon, or "glyphs", that can be easily manipulated. If desired, this set of functions can be extended using the Integrated Development Environment.



DEMOS AND SAMPLES

VisiQuest provides an extensive set of demos and sample workspaces that will make creating your application easy. You can begin with a sample and change the icons ("glyphs") to match your needs, or you can start with a blank slate.



NESTING

The VisiQuest Visual Programming Environment can be used to prototype complex analysis and visualization algorithms. Here, a workspace uses three layers of "Nesting", grouping of many glyphs into a procedure which opens as a separate workspace, to make a complex workspace easier to manipulate and understand.

"Using the Visual Programming Environment makes it simple to do the development that you need to solve the problem at hand."

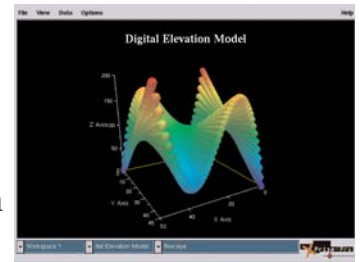
- Karen Bloch, Senior Research Engineer, DuPont

Sophisticated Functionality:

- › Link together glyphs to represent data flow
- › Create multiple analysis paths from a single data source
- › Use advanced programming language constructs: e.g.,
 - Loops
 - Procedures
 - Control structures (if/else, while, count, and trigger)
 - Branch and merge data flow
- › Edit settings on each glyph
- › Update your workspace on-the-fly and see immediate results
- › View progress of your program through interactive Workspace
- › Save workspaces to reuse in other applications

Connect Different Toolboxes in a Single Workspace:

The extensive image processing, data manipulation, matrix processing, and scientific visualization operators can all be interconnected within the Visual Programming Environment.



DATA VISUALIZATION
XPrismPro interactive plotting

Share Your Results:

It is simple to share a workspace with another VisiQuest user to run on a separate machine, or to compile your work into a simple "tear-away" program to run on another machine without VisiQuest.

You can access many data visualization tools through the Visual Programming Environment that will make reporting on your data easy. Some of the tools are:

- › **Animate** provides an extensive sequencing tool
- › **Render** produces images from geometric data
- › **Extractor** performs Region of Interest extraction
- › **Edit Image** allows image display and manipulation
- › **XPrismPro** is an interactive 2D and 3D plotting package
- › **Spectra** helps you work with multi-spectral images
- › **Spectrum** enables interactive image classification